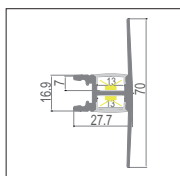
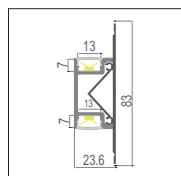


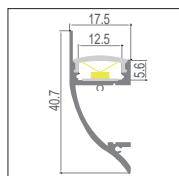
23
Page 105



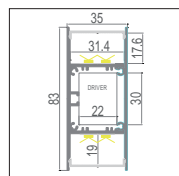
94
Page 107



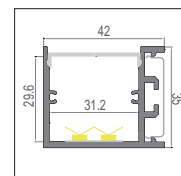
92
Page 109



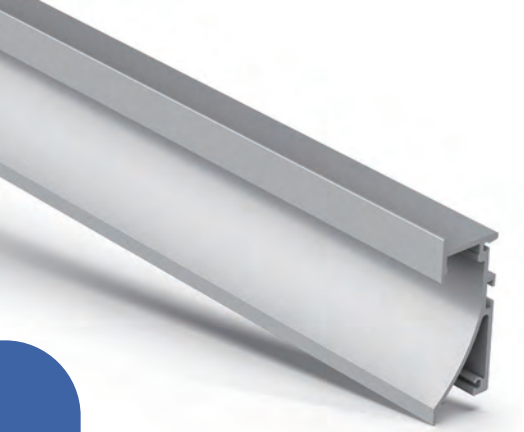
93
Page 111



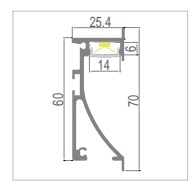
90
Page 113



58
Page 115



Aluminium Profile



23



Specification:

Suitable for PCB	12mm
Max. LED power:	19.2w/m
Installation:	Wall flush
Material:	Extruded Aluminium 6063
Finish:	Silver anodised, Black or White *
Diffuser:	PMMA flexible diffuser, can be 25m continuous rolled
Length:	2000mm or 2500mm continuous **
Size:	Profile (W) 25.4mm, (H) 60mm
Driver installation:	Remote driver required
* Custom powder coated colour upon request. Surcharge apply.	
** Profile sold per metre. Can be cut to suit any length up to 6000mm.	



Model 23



PMMA Diffuser
 (Opal, light trans. >52%)
 (Milky, light trans. >65%)
 (Frost, light trans. >81%)
 (Clear, light trans. >95%)

PC Diffuser
 (Opal, light trans. >52%)

Installing accessories:



Aluminium Endcap
(with/without hole)

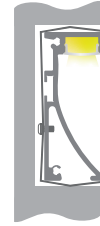
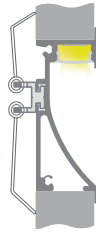


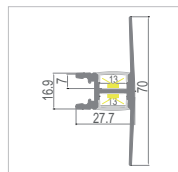
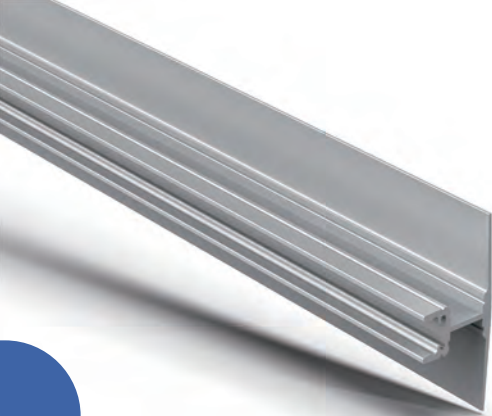
Metal Clip

(Optional)



Spring Clip

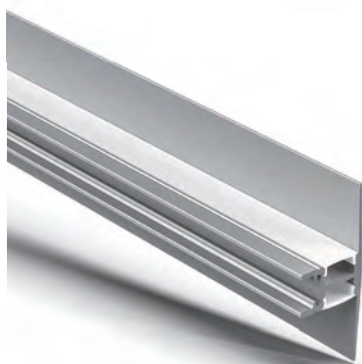




94



Aluminium Profile



Model 94

Specification:

Suitable for PCB 12mm

Max. LED power: 14.4w/m

Installation: Wall Surface mounted

Material: Extruded Aluminium 6063

Finish: Silver anodised, Black or White *

Diffuser: PMMA flexible diffuser, can be 25m continuous rolled

Length: 2000mm or 2500mm continuous **

Size: Profile (W) 27.7mm, (H) 70mm

Driver installation: Remote driver required

* Custom powder coated colour upon request. Surcharge apply.

** Profile sold per metre. Can be cut to suit any length up to 6000mm.



PMMA Diffuser

(Opal, light trans. >52%)
 (Milky, light trans. >65%)
 (Frost, light trans. >81%)
 (Clear, light trans. >95%)

PC Diffuser

(Opal, light trans. >52%)

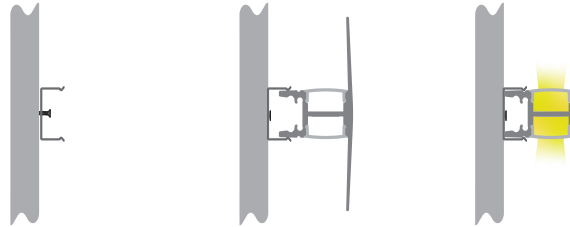
Installing accessories:

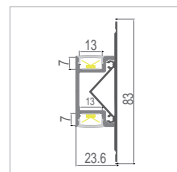
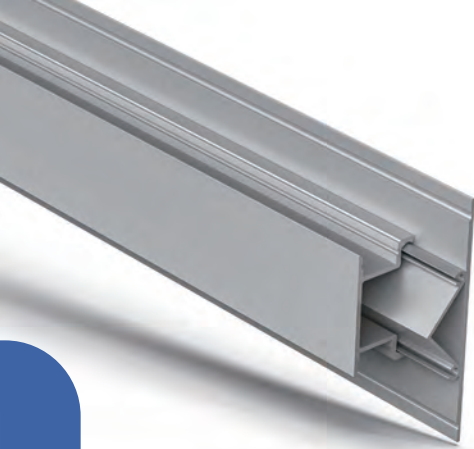


Aluminium Endcap
(without hole)



Metal Clip





92



70°

70°

Aluminium Profile



Model 92

Specification:

Suitable for PCB 12mm

Max. LED power: 14.4w/m

Installation: Wall Surface mounted

Material: Extruded Aluminium 6063

Finish: Silver anodised, Black or White *

Diffuser: PMMA flexible diffuser, can be 25m continuous rolled

Length: 2000mm or 2500mm continuous **

Size: Profile (W) 23.6mm, (H) 83mm

Driver installation: Remote driver required

* Custom powder coated colour upon request. Surcharge apply.

** Profile sold per metre. Can be cut to suit any length up to 4000mm.



PMMA Diffuser

- (Opal, light trans. >52%)
- (Milky, light trans. >65%)
- (Frost, light trans. >81%)
- (Clear, light trans. >95%)

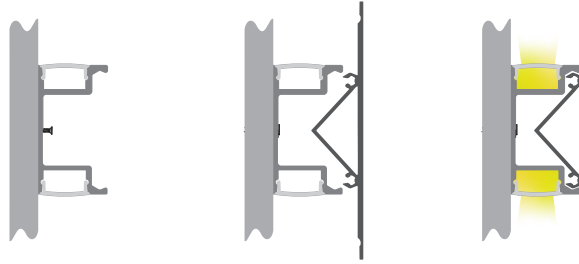
PC Diffuser

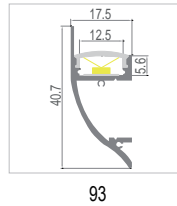
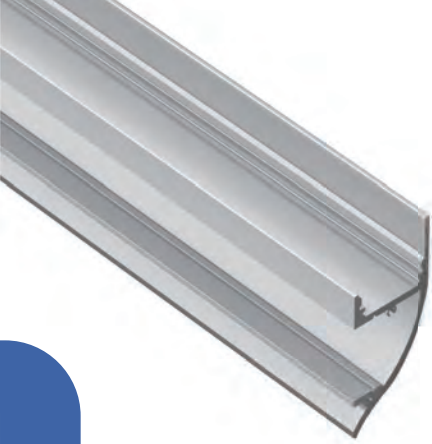
- (Opal, light trans. >52%)

Installing accessories:



Aluminium Endcap
(without hole)





Specification:

Suitable for PCB	12mm
Max. LED power:	19.2w/m
Installation:	Wall Surface mounted
Material:	Extruded Aluminium 6063
Finish:	Silver anodised, Black or White *
Diffuser:	PMMA flexible diffuser, can be 25m continuous rolled
Length:	2000mm or 2500mm continuous **
Size:	Profile (W) 17.5mm, (H) 40.7mm
Driver installation:	Remote driver required
* Custom powder coated colour upon request. Surcharge apply.	
** Profile sold per metre. Can be cut to suit any length up to 4000mm.	

Aluminium Profile



Model 93



PC Diffuser
(Opal, light trans. >52%)

Installing accessories:

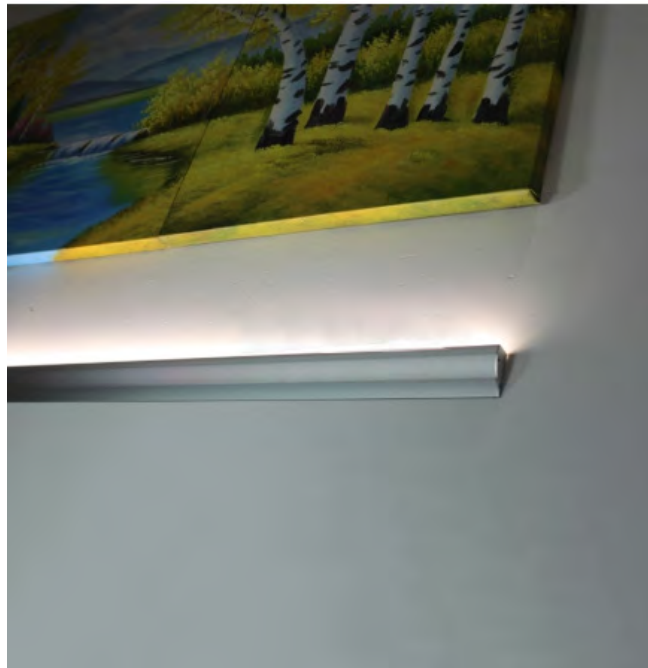
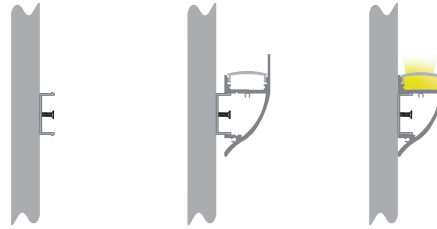


Plastic
(without hole)

Endcap

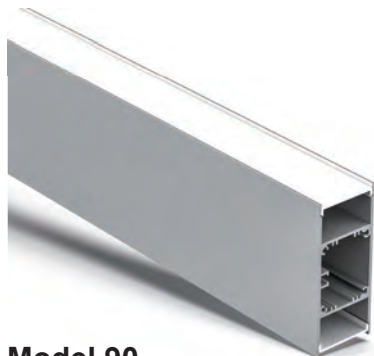


Metal Clip





Aluminium Profile



Model 90

Specification:

Suitable for PCB 30mm

Max. LED power: 19.2w/m

Installation: Wall Surface mounted

Material: Extruded Aluminium 6063

Finish: Silver anodised, Black or White *

Diffuser: PMMA flexible diffuser, can be 25m continuous rolled

Length: 2000mm or 2500mm continuous **

Size: Profile (W) 35mm, (H) 83mm

Driver installation: Remote or integral driver required

* Custom powder coated colour upon request. Surcharge apply.

** Profile sold per metre. Can be cut to suit any length up to 6000mm.



PMMA Diffuser

(Opal, light trans. >63%)

(New opal, light trans. >74%)

(Frost, light trans. >89%)

(Clear, light trans. >95%)

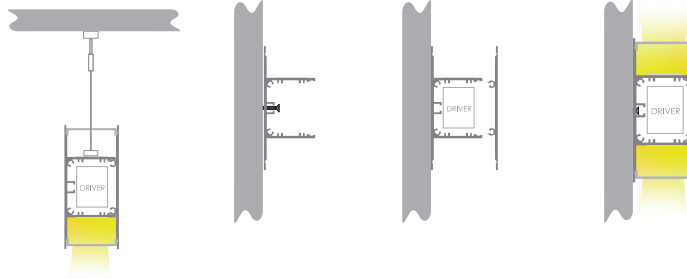
Installing accessories:

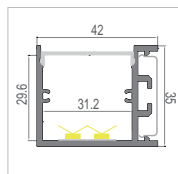
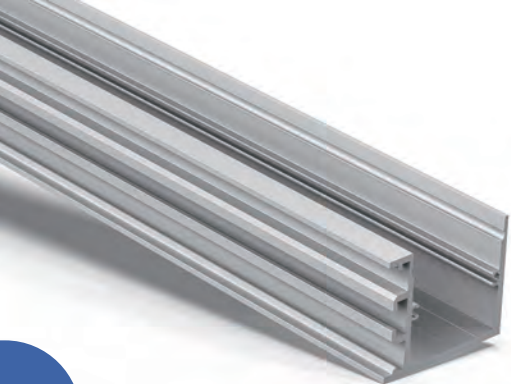


Aluminium Endcap
(without hole)



Suspension Kits
(Optional)





Specification:

Suitable for PCB 30mm

Max. LED power: 38.4w/m

Installation: Wall Surface mounted

Material: Extruded Aluminium 6063

Finish: Silver anodised, Black or White *

Diffuser: PMMA flexible diffuser, can be 25m continuous rolled

Length: 2000mm or 2500mm continuous **

Size: Profile (W) 42mm, (H) 35mm

Driver installation: Remote driver required

* Custom powder coated colour upon request. Surcharge apply.

** Profile sold per metre. Can be cut to suit any length up to 6000mm.

Aluminium Profile



Model 58



PMMA Diffuser








(Opal, light trans. >63%)

(New opal, light trans. >74%)

(Frost, light trans. >89%)

(Clear, light trans. >95%)

Installing accessories:

	Metal Clip		Joiners 180°A
	Screwless Endcap (with hole)		Joiners 90°B
	Joiners 90°A		Joiners 120°B
	Joiners 120°A		

