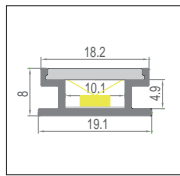
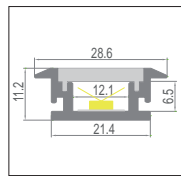


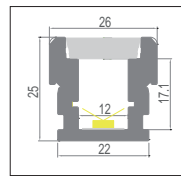
62
Page 75



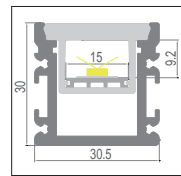
66
Page 77



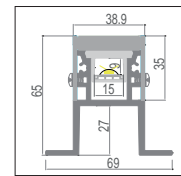
38
Page 79



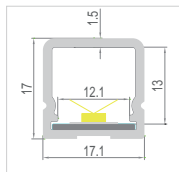
35
Page 81



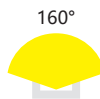
63
Page 83



64
Page 85



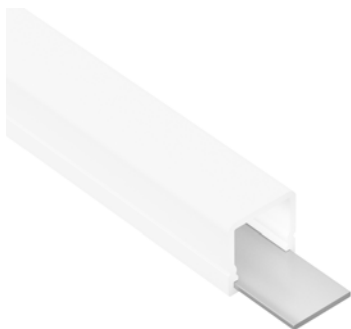
62



Aluminium Profile



Model 62



PMMA Diffuser
(Opal, light trans. >52%)

Specification:

Suitable for PCB 12mm

Max. LED power: 14.4w/m

Installation: Surface

Material: Extruded Aluminium 6063

Finish: Silver anodised, Black or White *

Diffuser: PMMA flexible diffuser

Length: 2000mm or 2500mm continuous **

Size: Profile (W) 17.1mm, (H) 17mm

Driver installation: Remote driver required

* Custom powder coated colour upon request. Surcharge apply.

** Profile sold per metre. Can be cut to suit any length up to 4000mm.

Installing accessories:



Plastic Endcap
(with/without hole)

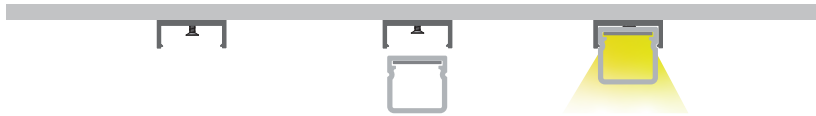


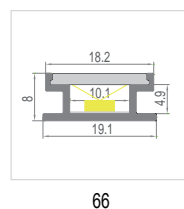
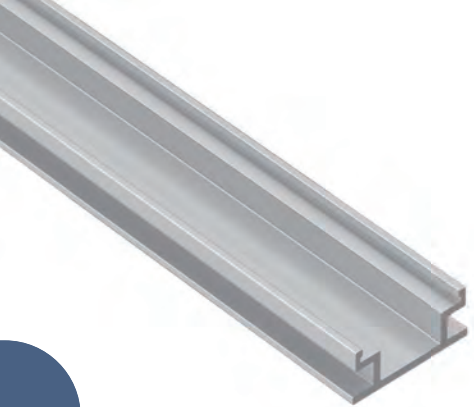
(Optional)

Metal Clip



Plastic Clip





66

Aluminium Profile



Model 66

Specification:

Suitable for PCB	10mm
Max. LED power:	14.4w/m
Installation:	Floor Recessed
Material:	Extruded Aluminium 6063
Finish:	Silver anodised *
Diffuser:	PC flexible diffuser
Length:	2000mm or 2500mm continuous **
Size:	Profile (W) 19.1mm, (H) 8mm
Driver installation:	Remote driver required

* Custom powder coated colour upon request. Surcharge apply.

** Profile sold per metre. Can be cut to suit any length up to 4000mm.



PC Diffuser
(Opal, light trans. >50%)

Installing accessories:

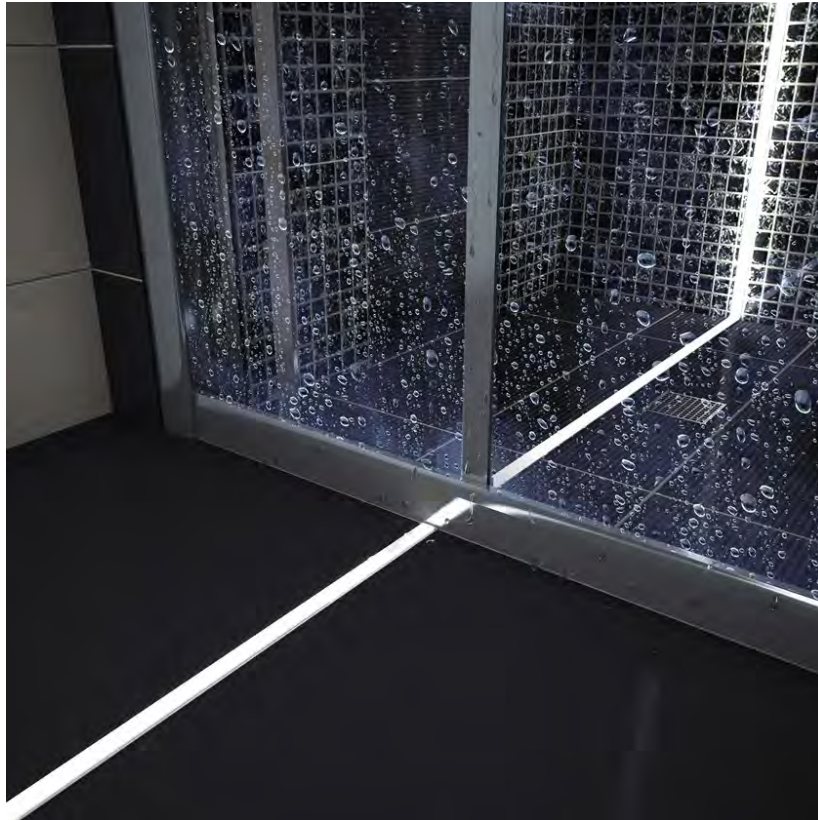
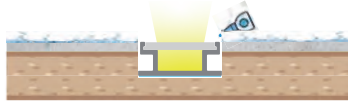


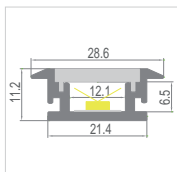
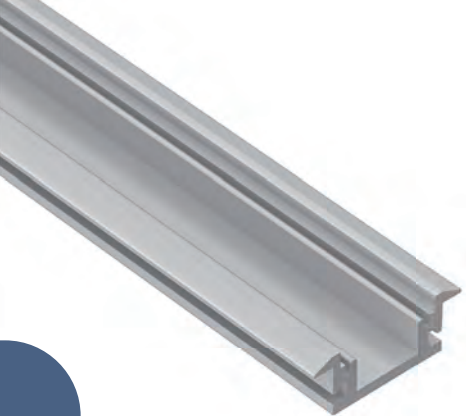
Plastic Endcap
(with/without hole)



Metal Clip

(Optional)





38



Specification:

Suitable for PCB 12mm

Max. LED power: 14.4w/m

Installation: Floor Recessed

Material: Extruded Aluminium 6063

Finish: Silver anodised *

Diffuser: PC flexible diffuser

Length: 2000mm or 2500mm continuous **

Size: Profile (W) 28.6mm, (H) 11.2mm

Driver installation: Remote driver required

* Custom powder coated colour upon request. Surcharge apply.

** Profile sold per metre. Can be cut to suit any length up to 4000mm.

Aluminium Profile



Model 38



PC Diffuser
(Opal, light trans. >50%)

Installing accessories:

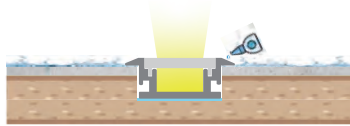


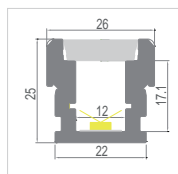
Plastic Endcap
(with/without hole)



Metal Clip

(Optional)





35



Aluminium Profile



Model 35

Specification:

Suitable for PCB 12mm

Max. LED power: 19.2w/m

Installation: Inground Recessed

Material: Extruded Aluminium 6063

Finish: Silver anodised *

Diffuser: PC flexible diffuser

Length: 2000mm or 2500mm continuous **

Size: Profile (W) 26mm, (H) 25mm

Driver installation: Remote driver required

* Custom powder coated colour upon request. Surcharge apply.

** Profile sold per metre. Can be cut to suit any length up to 6000mm.



PC Diffuser
(Opal, light trans. >45%)

Installing accessories:

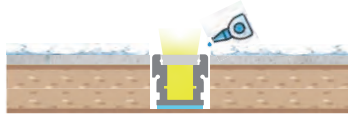


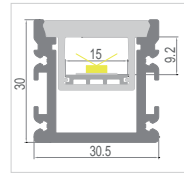
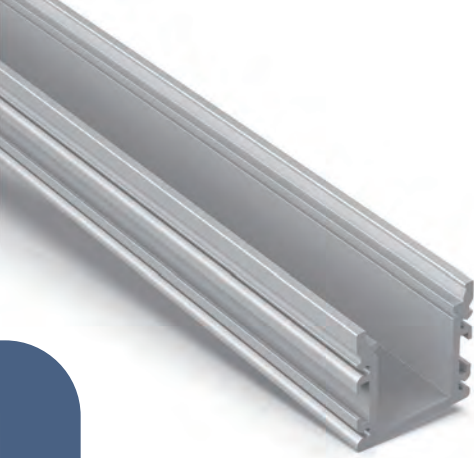
Plastic Endcap
(with/without hole)



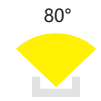
Metal Clip

(Optional)





63



80°

Specification:

Suitable for PCB 15mm	
Max. LED power:	19.2w/m
Installation:	Inground Recessed
Material:	Extruded Aluminium 6063
Finish:	Silver anodised *
Diffuser:	PC flexible diffuser
Length:	2000mm or 2500mm continuous **
Size:	Profile (W) 30.5mm, (H) 30mm
Driver installation: Remote driver required	
* Custom powder coated colour upon request. Surcharge apply.	
** Profile sold per metre. Can be cut to suit any length up to 2500mm.	

Aluminium Profile



Model 63



PC Diffuser
(Opal, light trans. >45%)

Installing accessories:



Aluminium Endcap
(with/without hole)



Soft Endcap



(Optional)

Waterproof Cable Grommet



(Optional)

Metal Clip



(Optional)

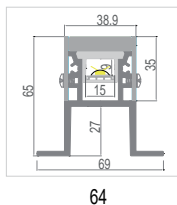
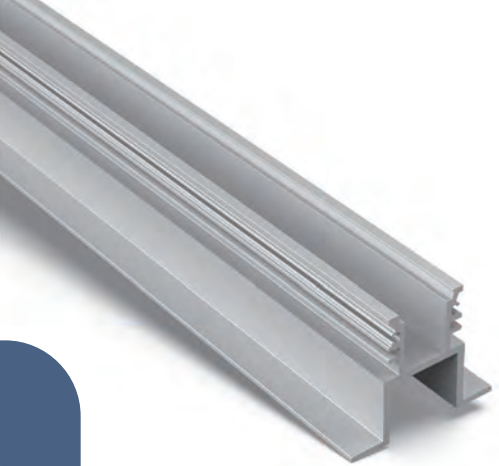
IP68 Waterproof Connector



(Optional)

IP68 Waterproof Box





Aluminium Profile



Model 64



Specification:

Suitable for PCB 15 mm

Max. LED power: 19.2w/m

Installation: Inground Recessed

Material: Extruded Aluminium 6063 + Stainless steel 304

Finish: Silver anodised *

Diffuser: PC flexible diffuser

Length: 2000mm or 2500mm continuous **

Size: Profile (W) 69mm, (H) 65mm

Driver installation: Remote driver required

* Custom powder coated colour upon request. Surcharge apply.

** Profile sold per metre. Can be cut to suit any length up to 2500mm.



PC Diffuser
(Opal, light trans. >45%)

Installing accessories:



Aluminium Endcap
(without hole)



Soft Endcap



Stainless steel side bar



Glass Diffuser



(Optional)

Waterproof Cable Grommet



(Optional)

IP68 Waterproof Box



(Optional)

IP68 Waterproof Connector

