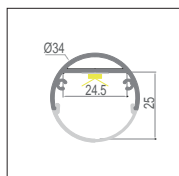
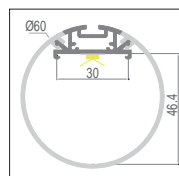


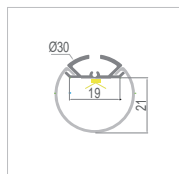
65
Page 97



37
Page 99



53
Page 101



65



Aluminium Profile



Model 65

Specification:

Suitable for PCB 18mm	
Max. LED power:	28.8w/m
Installation:	Surface /Suspended
Material:	Extruded Aluminium 6063
Finish:	Silver anodised, Black or White *
Diffuser:	PC flexible diffuser
Length:	2000mm or 2500mm continuous **
Size:	Profile (W) 30mm, (H) 30mm
Driver installation: Remote driver required	
* Custom powder coated colour upon request. Surcharge apply.	
** Profile sold per metre. Can be cut to suit any length up to 4000mm.	



PC Diffuser
(Opal, light trans. >50%)

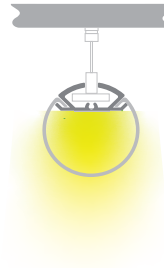
Installing accessories:

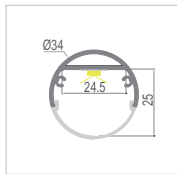
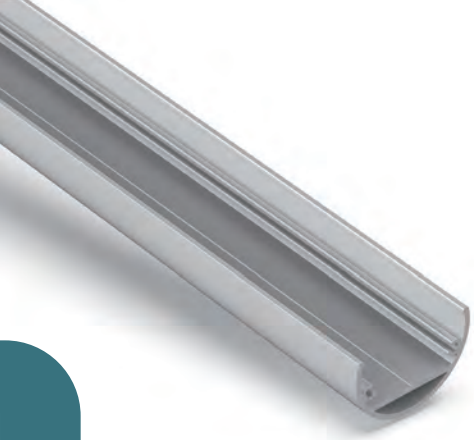


Plastic Endcap
(with/without hole)

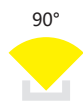


Suspension Kits





37



Aluminium Profile



Model 37

Specification:

Suitable for PCB	24mm
Max. LED power:	28.8w/m
Installation:	Wardrobe hanging /Suspended
Material:	Extruded Aluminium 6063
Finish:	Silver anodised, Black or White *
Diffuser:	PC flexible diffuser
Length:	2000mm or 2500mm continuous **
Size:	Profile (W) 34mm, (H) 34mm
Driver installation:	Remote driver required
* Custom powder coated colour upon request. Surcharge apply.	
** Profile sold per metre. Can be cut to suit any length up to 5000mm.	



PC Diffuser
(Opal, light trans. >50%)

Installing accessories:



Aluminium Endcap
(with/without hole)

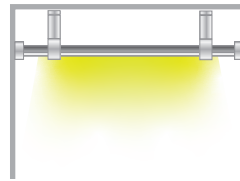


Wall Bracket



(Optional)

Supporter

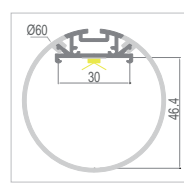




Aluminium Profile



Model 53



53



165°

Specification:

Suitable for PCB	30mm
Max. LED power:	28.8w/m
Installation:	Suspended
Material:	Extruded Aluminium 6063
Finish:	Silver anodised, Black or White *
Diffuser:	PC flexible diffuser
Length:	2000mm or 2500mm continuous **
Size:	Profile (W) 60mm, (H) 60mm
Driver installation:	Remote driver required
* Custom powder coated colour upon request. Surcharge apply.	
** Profile sold per metre. Can be cut to suit any length up to 6000mm.	



PC Diffuser
(Opal, light trans. >50%)

Installing accessories:



Plastic Endcap
(without hole)



Suspension Kits



(Optional)

Aluminium Endcap
(without hole)

